

NorLLM—Åpen norsk språkmodell fra NorwAI

Benjamin Kille

NorwAI

Norwegian Research Center
for AI Innovation



 **NTNU**



Norwegian Centre
for Research-based
Innovation

AI is here!

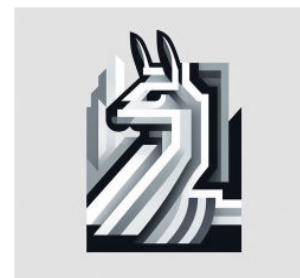


Gemini



NorLLM

To be available in Q2 2024



	GPT-2	LLAMA 2	Mistral
Size	7B parameter	7B parameter	7B parameter
License	Commercial use allowed	Commercial use allowed	Commercial user allowed
Setup	Pre-training	Continued Pre-training	Continued Pre-training

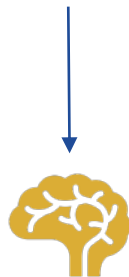




Use **gigantic** collections of “text” to **generalize** structures

1 Gunnar og Per finansierer forskning og forskningsbasert innovasjon.

2 Gunnar og Per ?



finansierer 0.05

snakker 0.02

ekorn 0.08

... ..



Correct Token predicted



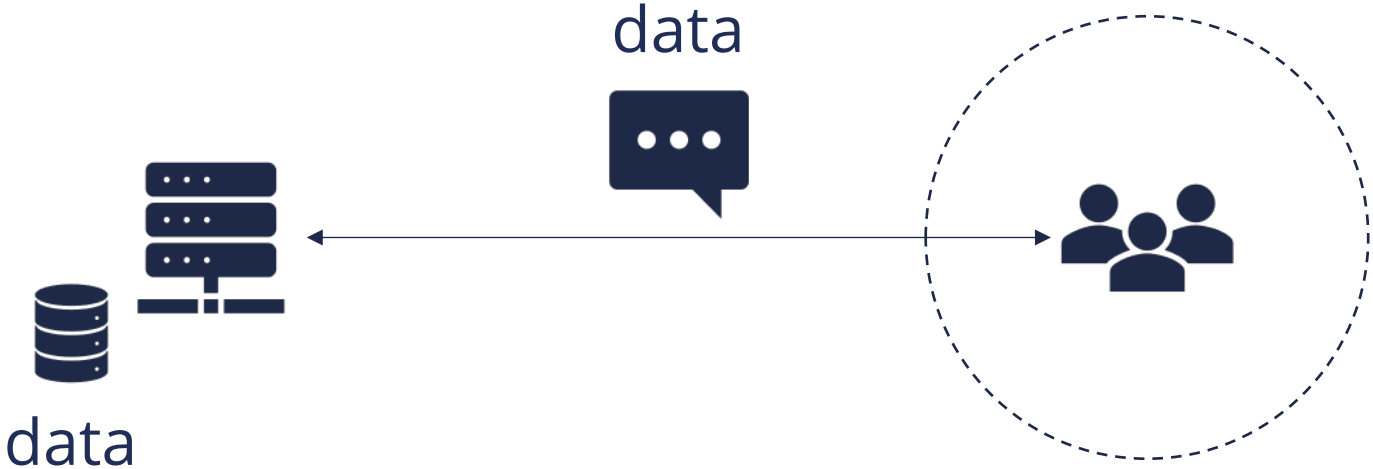
Incorrect Token predicted

adjust the model!

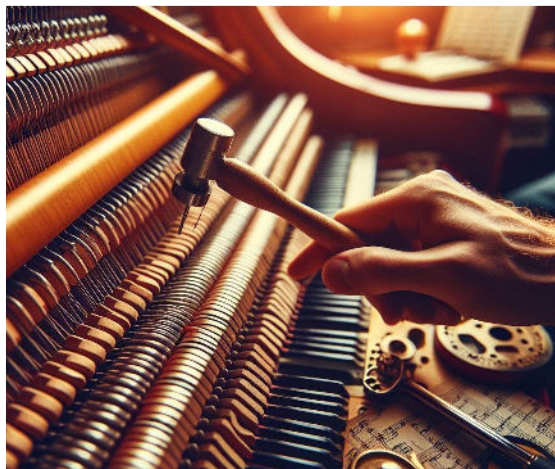


Data Protection
Privacy
Legal Settings
Data Ownership

Better Norwegian Data
=
Better Norwegian



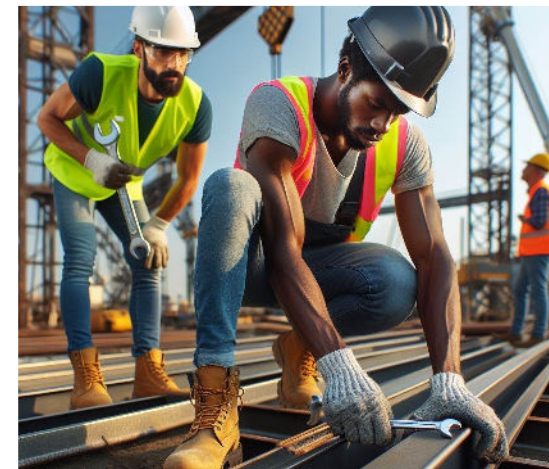
How to get the Model to do what you want?



Fine-tuning



Instructing



Alignment

MIMIR



UNIVERSITY
OF OSLO

Data

- Data set with open license
- Data set with copyright protected material

Training

- Building different models
- IDUN

Evaluating

- Benchmarking
- Measuring Benefit of copyrighted material



TrustLLM



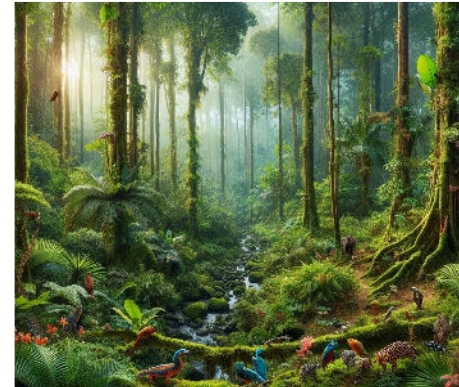
Germanic Languages

Shared Culture and Values



Trustworthiness

Establishing Trust for
Technology to Succeed



LLM Eco-system

Bringing Different Actors
Together



The Role of NTNU



Build
Large
Models



Educate



Dialog
with
Partners



Get in Touch!

Benjamin Kille

benjamin.u.kille@ntnu.no

